



#192700 WOMEN'S 2B1 LADIES' TEE

- 100% Polyester moisture management/odor protection performance fabric
- Built-in self-fabric mask can easily be pulled over face to act as a barrier to the exterior environment
- Built-in mask contours and conforms to the face and has ear holes to provide maximum comfort and stability
- Badger Sport paneled shoulder for maximum movement
- Double-needle hem
- Badger heat seal logo on left sleeve

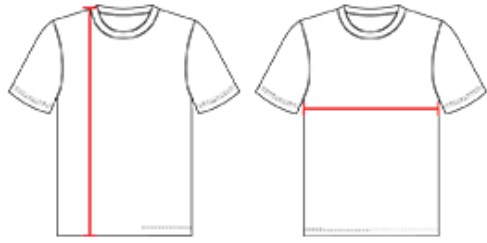
COLORS



SPECIFICATIONS

	XS	S	M	L	XL	2XL
Piece Weight measured in pounds	0.36	0.36	0.36	0.36	0.36	0.36
Spec Body Length measured in inches	25	26	27	28	29	30
Spec Chest Width measured in inches	16	17.5	19	21	23	25
Case Count # of units per case	36	36	36	36	36	36

HOW TO MEASURE



These product specifications reference a product's measurements. For sizing information and guidance, please reference our sizing charts.

BODY LENGTH

Measured on the front from the shoulder/neck intersection to the bottom of the garment.

CHEST WIDTH

Measured across the chest, 1" below the armhole seam.