



# # 436200 WOMEN'S PRO HEATHER WOMEN'S V-NECK TEE

- Badger heat seal logo on left sleeve
- Self-fabric collar
- 100% Heathered Polyester moisture management fabric
- Badger Sport paneled shoulder for maximum movement
- Double-needle hem

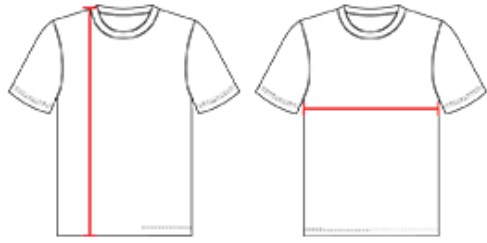
## COLORS



## SPECIFICATIONS

	XS	S	M	L	XL	2XL
<b>Piece Weight</b> measured in pounds	0.36	0.36	0.36	0.36	0.36	0.36
<b>Spec Body Length</b> measured in inches	25	26	27	28	29	30
<b>Spec Chest Width</b> measured in inches	16	17 1/2	19	21	23	25
<b>Case Count</b> # of units per case	36	36	36	36	36	36

## HOW TO MEASURE



These product specifications reference a product's measurements. For sizing information and guidance, please reference our sizing charts.

### **BODY LENGTH**

Measured on the front from the shoulder/neck intersection to the bottom of the garment.

### **CHEST WIDTH**

Measured across the chest, 1" below the armhole seam.