

Specification Sheet

Part Number: 151-00810

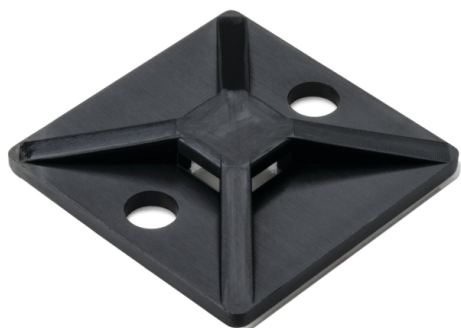
For use with HellermannTyton T18 - T50 cable ties to provide stability when securing bundles.

4-way opening allows cable ties to be installed parallel or perpendicular to bundles.

The high bond acrylic based adhesive is ideal for outdoor applications, with a static load weight of 1.1 lb.

Two predrilled holes extend mounting options and solutions.

Extended adhesive liner is easy to remove quickly.



High Bond Acrylic Adhesive Cable Tie Mount, 1.12 x 1.12", Use T18-T50 Cable Tie, PA66UV, Black, 100/pkg

Article Number 151-00810

Type MB4A

Color Black (BK)

Quantity Per pack

Product Description MB4A adhesive mounts are for use with HellermannTyton T18 - T50 Series cable ties to provide stability when securing bundles. The high-bond acrylic adhesive-backed mounts can be used to secure a bundle and have two predrilled holes to extend mounting options.

Short Description	High Bond Acrylic Adhesive Cable Tie Mount, 1.12 x 1.12", Use T18-T50 Cable Tie, PA66UV, Black, 100/pkg
Global Part Name	MB4A-PA66UV-BK
Length L (Imperial)	1.12
Length L (Metric)	28.5
Fixation Method	Adhesive
Width W (Imperial)	1.12
Width W (Metric)	28.5
Cable Ties	T18 - T50
Height H (Imperial)	.23
Height H (Metric)	5.8
Cable Tie Width Max (Imperial)	0.18
Cable Tie Width Max (Metric)	4.6
Mounting Hole Diameter D (Imperial)	0.18 "
Mounting Hole Diameter D (Metric)	4.6 mm
Mounting Hole Centers (Imperial)	0.8

Material	Polyamide 6.6 UV-resistant (PA66UV)
Material Shortcut	PA66UV
Adhesive	Acrylate with base of acrylic foam
Flammability	UL 94 V-2 (excluding adhesive)
UV Resistant (Yes/No)	Yes
Use Conditions	For Indoor and Outdoor Use
Adhesive Operating Temperature	-31°F to +158°F (-35 °C to +70 °C)
Operating Temperature	-40°F to +185°F (-40°C to +85°C)
Reach Compliant (Article 33)	Yes
ROHS Compliant	Yes
Package Quantity (Imperial)	100
Package Quantity (Metric)	100
Customs Number	3926909988

7930 N. Faulkner Road, Milwaukee, WI 53224
Phone: (800) 537-1512 | Email: corp@htamericas.com