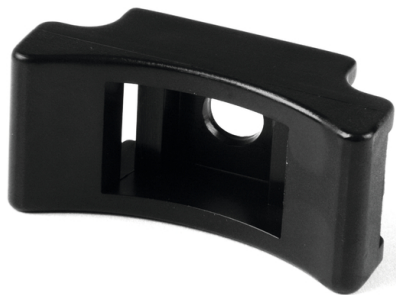


## Specification Sheet

Part Number: 151-27202



Concave design ensures larger diameter cables and bundles are fully supported

Quickly installs with either a screw or bolt

Strong part design to allows for heavy bundles

Mounting Cradle for Cable Tie Series T50-T250 Max Bun Dia 3" Length 1.6" PA66, Black 100/pkg

Article Number 151-27202

Type LKCSF1

Color Black (BK)

Quantity Per pack

Product Description Mounting Cradles hold cables and harnesses securely and clear of the panel surface. These are designed with the ability to hold heavier bundles, and can support cable ties up to .5" wide.

Short Description Mounting Cradle for Cable Tie Series T50-T250 Max Bun Dia 3" Length 1.6" PA66, Black 100/pkg

Global Part Name LKCSF1-PA66-BK

Length L (Imperial)	1.6
Length L (Metric)	40.0
Fixation Method	Screw Mount
Width W (Metric)	19.0
Height H (Imperial)	.66
Height H (Metric)	16.8
Cable Tie Width Max (Metric)	13.0
Mounting Hole Diameter D (Imperial)	0.23 "
Mounting Hole Diameter D (Metric)	6.0 mm
Mounting Hole Diameter D Max (Metric)	6.0
Material	Polyamide 6.6 (PA66)
Material Shortcut	PA66
Flammability	UL 94 V-2
UV Resistant (Yes/No)	No
Use Conditions	For Indoor and Outdoor Use

Operating Temperature -40°F to +185°F (-40°C to +85°C)

Reach Compliant (Article 33) Yes

ROHS Compliant Yes

Package Quantity (Imperial) 100

Package Quantity (Metric) 100

Customs Number 3926909988

7930 N. Faulkner Road, Milwaukee, WI 53224

Phone: (800) 537-1512 | Email: [corp@htamericas.com](mailto:corp@htamericas.com)

© 2025 HellermannTyton. All Rights Reserved.

[Contact Us](#) [RoHS/WEEE Compliance](#) [Disclaimer](#) [Terms and Conditions](#)