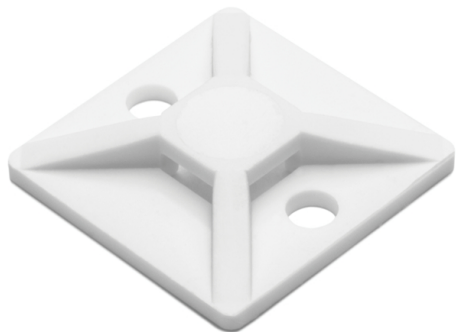


Specification Sheet

Part Number: MB310M4



Compact size fits most mounting applications.

Simple to install with a screw or rivet.

Single hole attachment with two-way entry for cable tie.

Screw Mount Cable Tie Base, 0.75 x .75", 0.14" Max Tie Width, 0.12" Hole Dia, PA66, White, 1000/pkg

Article Number 151-28305

Type MB3

Color White (WH)

Quantity Per bag

Product Description These cable tie mounts are compact in size. They are designed for simple yet robust installation. They pair with a cable tie for mounting applications including telecom equipment, switchgear and control cabinets.

Short Description Screw Mount Cable Tie Base, 0.75 x .75", 0.14" Max Tie Width, 0.12" Hole Dia, PA66, White, 1000/pkg

Global Part Name MB3-PA66-WH

| | |
|---------------------------------------|----------------------|
| Length L (Imperial) | 0.75 |
| Length L (Metric) | 19.0 |
| Fixation Method | Screw Mount |
| Width W (Imperial) | 0.75 |
| Width W (Metric) | 19.0 |
| Cable Ties | T18 - T30 |
| Height H (Imperial) | .15 |
| Height H (Metric) | 3.80 |
| Cable Tie Width Max (Imperial) | 0.14 |
| Cable Tie Width Max (Metric) | 3.6 |
| Mounting Hole Diameter D (Imperial) | 0.12 |
| Mounting Hole Diameter D (Metric) | 3.0 mm |
| Mounting Hole Diameter D Max (Metric) | 3.0 |
| Mounting Hole Centers (Imperial) | 0.52 |
| Material | Polyamide 6.6 (PA66) |

| | |
|-------------------------------|----------------------------------|
| Material Shortcut | PA66 |
| Flammability | UL 94 V-2 |
| UV Resistant (Yes/No) | No |
| Use Conditions | For Indoor Use Only |
| Operating Temperature | -40°F to +185°F (-40°C to +85°C) |
| Reach Compliant (Article 33) | No |
| ROHS Compliant | Yes |
| Certification/Specification | UL |
| UL Recognized (US) | Yes |
| UL Recognized (US and Canada) | Yes |
| Package Quantity (Imperial) | 1000 |
| Package Quantity (Metric) | 1000 |
| Customs Number | 3926909988 |