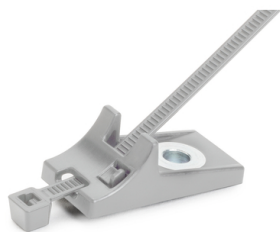


Specification Sheet

Part Number: 156-02688



Two-piece cable tie and mount allows for a wide range of bundle sizes.

A suitable alternative for metal clamps.

Robust design withstands vibration and displacement forces.

Metal bushing allows for high tightening torque.

2-Piece Cable Tie/Screw Mount, 8" Long, M6 Hole, 2.0" Max Bundle Dia, 50lb, PPS, Silver, 2000/ctn

Article Number 156-02688

Type T50RCPCM6BSET

Color Silver (SR)

Quantity Per bag

Product Description These cable tie mounts attach with a screw or bolt to an existing hole, or secure to a stud with a nut. They provide an attachment point for securing and routing a single bundle. These mounts provide the highest level of fastening for critical cable security.

Short Description 2-Piece Cable Tie/Screw Mount, 8" Long, M6 Hole, 2.0" Max Bundle Dia, 50lb, PPS, Silver, 2000/ctn

Global Part Name T50RCPCM6BSET-PPS-SR

Minimum Tensile Strength (Imperial)	50
Minimum Tensile Strength (Metric)	225
Length L (Imperial)	7.874
Length L (Metric)	200.0
Fixation Method	Screw Mount
Identification Plate Position	none
Releasable Closure	No
Tie Closure	plastic pawl
Variant	Inside Serrated
Width W (Imperial)	0.18
Width W (Metric)	4.6
Bundle Diameter Min (Imperial)	0.08
Bundle Diameter Min (Metric)	2.0
Bundle Diameter Max (Imperial)	1.97
Bundle Diameter Max (Metric)	50.0
Height H (Imperial)	0.61

Height H (Metric)	16.0
Mounting Hole Diameter D (Imperial)	0.24
Mounting Hole Diameter D (Metric)	6.2 mm
Material	Polyphenylene Sulfide (PPS)
Foot Part Material	PPS
Material Shortcut	PPS
Material Cable Tie	Polyphenylene Sulfide (PPS)
UV Resistant (Yes/No)	No
Use Conditions	For Indoor Use Only
ROHS Compliant	Yes
Package Quantity (Imperial)	3000
Package Quantity (Metric)	3000
Customs Number	3926909988

