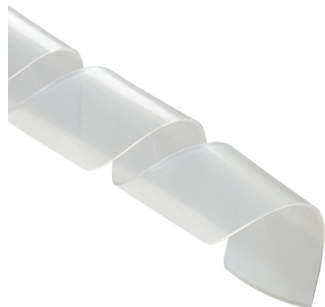


Specification Sheet

Part Number: 5P9C



Sheathing allows flexible routing and lead-out of cables.

The inner edges are beveled preventing damage to cables.

Sheathing is reusable and resistant to most chemicals.

Spiralwrap is UL Recognized.

Spiralwrap Protective Sheathing, 1" Diameter, PTFE, Natural, 100 ft/roll

Article Number 161-05081

Type 5P

Color Natural (NA)

Quantity Per reel

Product Description HellermannTyton's Spiralwrap protective sheathing provides cable protection and flexible routing. Spiralwrap is wrapped around a group of cables to shield and organize. Polytetrafluoroethylene-Teflon (PTFE) offers the widest operating temperature range of any material. It's chemically inert and nonflammable. Natural color is milky white. Available by special order in black and colors.

Short Description Spiralwrap Protective Sheathing, 1" Diameter, PTFE, Natural, 100 ft/roll

| | |
|--------------------------------|--------------------------------|
| Global Part Name | 5P-PTFE-NA |
| Length L (Imperial) | 100.0 |
| Length L (Metric) | 30.48 |
| Variant | Spiral Binding |
| Bundle Diameter Min (Imperial) | 0.75 |
| Bundle Diameter Min (Metric) | 19.1 |
| Bundle Diameter Max (Imperial) | 5 |
| Bundle Diameter Max (Metric) | 127.0 |
| Diameter D (Imperial) | 1.0 |
| Diameter D (Metric) | 25.4 |
| Nominal Diameter (Imperial) | 1 |
| Nominal Diameter (Metric) | 25.4 |
| Wall Thickness WT (Imperial) | .040 |
| Wall Thickness WT (Metric) | 1.02 |
| Material | Polytetrafluoroethylene (PTFE) |

| | |
|------------------------------|-------------------------------------|
| Material Shortcut | PTFE |
| Flammability | UL 94 V-0 |
| Halogen Free | No |
| UV Resistant (Yes/No) | No |
| Use Conditions | For Indoor and Outdoor Use |
| Operating Temperature | -449°F to +500°F (-267°C to +260°C) |
| Reach Compliant (Article 33) | Yes |
| ROHS Compliant | Yes |
| UL Recognized (US) | Yes |
| Package Quantity (Imperial) | 100 |
| Package Quantity (Metric) | 30.48 |
| Customs Number | 3926909988 |