

## Specification Sheet

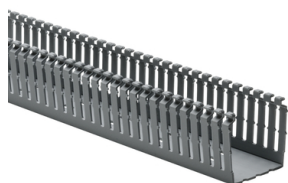
Part Number: 184-22001

Narrow fingers reduce fanning of wires to terminal blocks, providing a neater appearance.

Each finger features a double restriction to hold wires in the bottom portion of the duct, simplifying installation.

Mounting holes are uniform in size to those in slotted and solid wall duct but are provided every two inches to accommodate compact designs and provide ease of installation.

Nonpermanent adhesive allows repositioning prior to final installation.



High Density Slotted Wall Wiring Duct, 2" x 2", Adhesive, PVC, Gray, 30ft/Box

Article Number 184-22001

Type SLHDA2X2

Color Gray (GY)

Quantity Per box

Product Description HellermannTyton High-Density Slotted Wall Wiring Duct features narrow fingers equaling a 2-to-1 finger ratio compared to standard slotted wiring duct. With the narrow fingers, compact designs and components are more easily accommodated.

Short Description	High Density Slotted Wall Wiring Duct, 2" x 2", Adhesive, PVC, Gray, 30ft/Box
Global Part Name	SLHDA2X2-PVC-GY
Length L (Imperial)	6.0
Length L (Metric)	1.83
Width W (Imperial)	2.0
Width W (Metric)	50.8
Height H (Imperial)	2.07
Height H (Metric)	52.6
Mounting Hole Centers (Imperial)	2.0
Material	Polyvinylchloride (PVC)
Material Shortcut	PVC
Halogen Free	No
UV Resistant (Yes/No)	No
Use Conditions	For Indoor Use Only

Operating Temperature	+122°F (+50°C)
Reach Compliant (Article 33)	No
ROHS Compliant	Yes
Certification/Specification	EN 50085-2-3_1A CSA UL EN 50085-1:2005 + A1:2013
UL Recognized (US)	Yes
Package Quantity (Imperial)	30.0
Package Quantity (Metric)	9.14
Customs Number	3925900000

© 2024 HellermannTyton. All Rights Reserved.

[Contact Us](#)

[RoHS/WEEE Compliance](#)

[Disclaimer](#)

[Terms and Conditions](#)