

## Specification Sheet

Part Number: TSR2FW-33-1

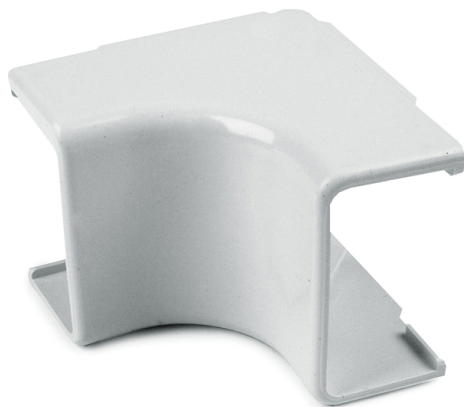
Tamper resistant covers with hidden latch provide security while allowing quick entry for cable maintenance.

PVC construction is lightweight, durable and more affordable than metallic raceway systems.

Flexible hinge is designed to reduce stress cracking and discoloration from repeated opening and closing.

Systems and fittings are available in white, office white and ivory to coordinate with a variety of décor.

Fittings incorporate a minimum 1" bend radius to meet TIA/EIA 568-B and 569-A standards.



Internal Corner Cover, 1-1/4", 1" Bend Radius, PVC, Office White, 1/bg

Article Number	250-02333
Type	TSR2-33-1
Color	Office White (OEWH)
Quantity Per	bag

Product Description	HellermannTyton surface raceway systems are the ideal solution for routing communication and power cables. No need to break into existing walls - raceway systems are designed to route cable along wall surfaces. Made of a PVC material, components are durable and affordable; and the one-piece construction and adhesive tape backing make positioning and mounting easy. HellermannTyton offers a low voltage TSR system and a power rated TSRP system that are available in three different diameters to accommodate different cable and wire bundle and conduit sizes. Both systems include a complete line of fittings and junction boxes that allow for clean and professional installations. TSR surface raceway systems can be used to route a variety of communication cable, including high speed UTP and fiber optic cable.
Short Description	Internal Corner Cover, 1-1/4", 1" Bend Radius, PVC, Office White, 1/bg
Global Part Name	TSR2-33-1-PVC-WH
Width W (Imperial)	1.25
Material	Polyvinylchloride (PVC)
Material Shortcut	PVC
Flammability	UL 94 V-0
Halogen Free	No
UV Resistant (Yes/No)	No
Use Conditions	For Indoor Use Only
Operating Temperature	+122°F (+50°C)

Reach Compliant (Article 33) No

ROHS Compliant Yes

Package Quantity (Imperial) 1

Package Quantity (Metric) 1

Customs Number 3925900000